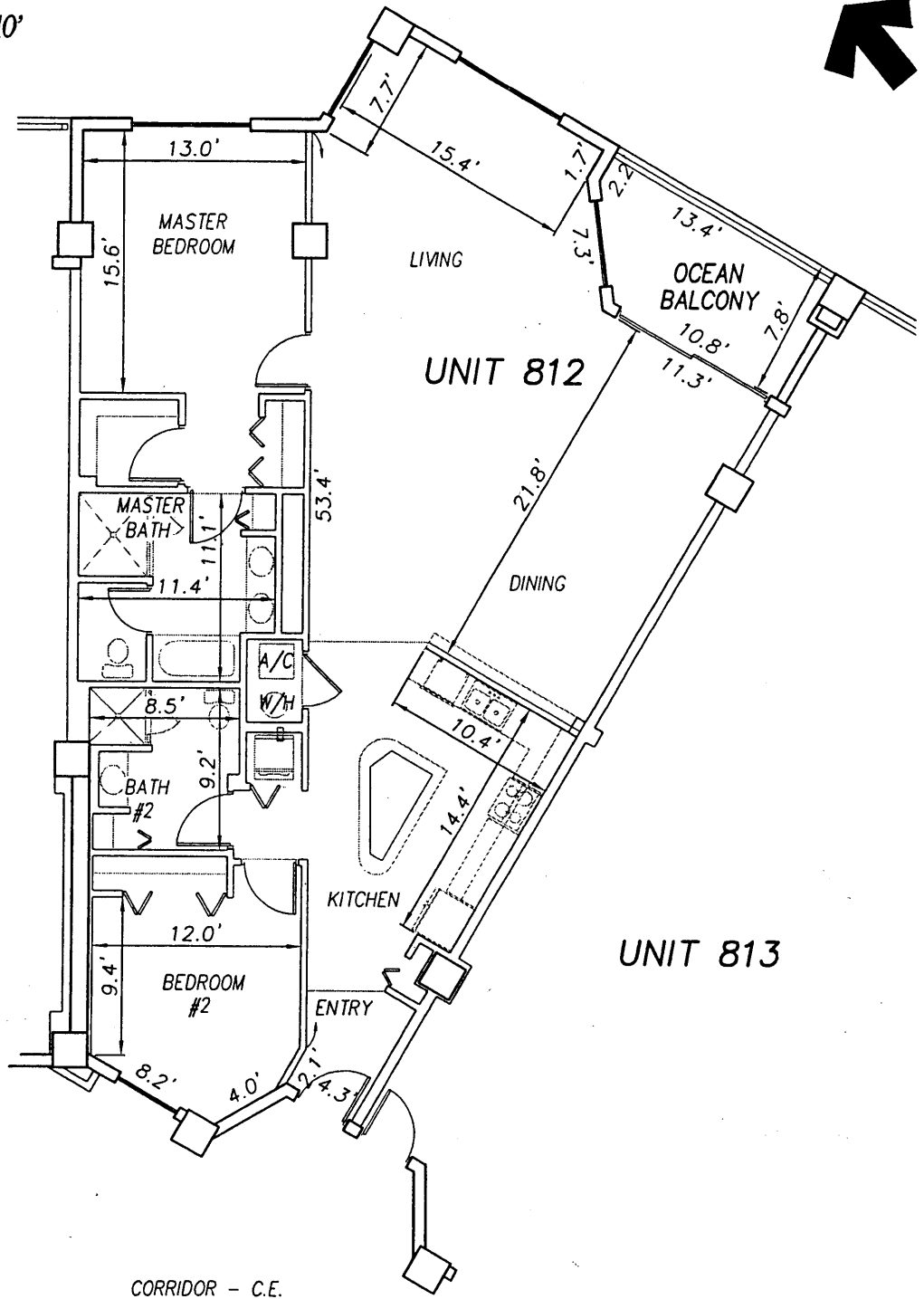


0 10 20

SCALE 1" = 10'

OFF REC 0983 PAGE 0362 EXHIBIT 'B'



\\survey\2001\land projects t2003\T3070PCBW\dwg\CONDO-sh 188 - 213 8th Fl.dwg 09/11/2003 09:13:51 AM EDT

**SURF CLUB II  
CONDOMINIUM**

SITUATED IN MATANZAS SHORES  
FLAGLER COUNTY, FLORIDA

**EIGHTH FLOOR - UNIT 812 (North Wing)**



**TOMOKA ENGINEERING**

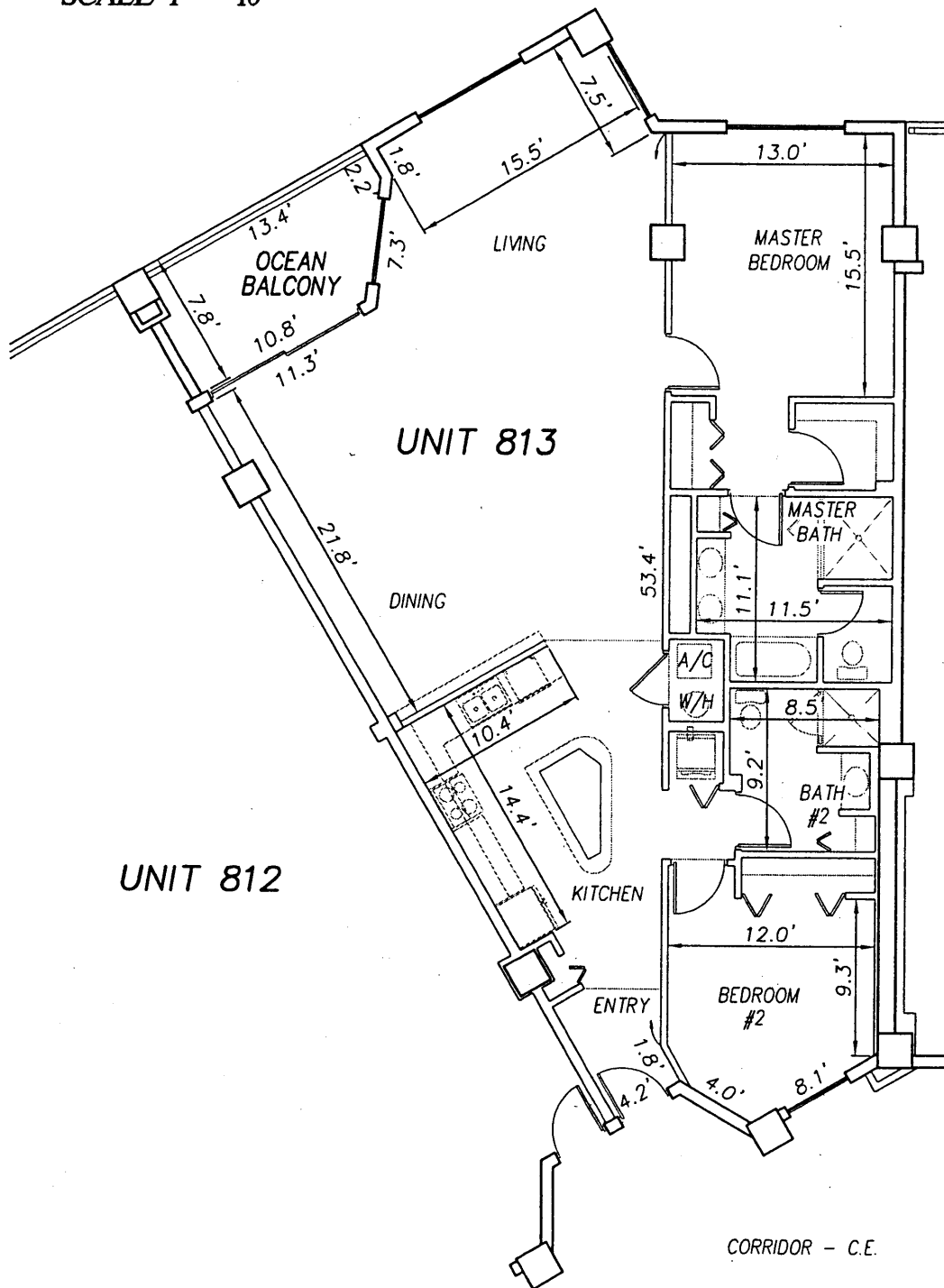
CIVIL ENGINEERING & LAND SURVEYING SINCE 1976  
DAYTONA BEACH FLAGLER/PALM COAST  
Main Office: 900 So. Ridgewood Ave., Daytona Beach, FL 32114  
Phone: 386-257-1600 Fax: 386-257-1601  
email: tomoka@tomoka-eng.com website: www.tomoka-engineering.com

0 10 20

SCALE 1" = 10'

OFF REC 0983 PAGE 0363

EXHIBIT 'B'



\\survey\2001\land projects\2003\T3070PCBWI\dwg\CONDO-sh 188 - 213 8th Fl.dwg 09/11/2003 09:13:51 AM EDT

**SURF CLUB II  
CONDOMINIUM**

SITUATED IN MATANZAS SHORES  
FLAGLER COUNTY, FLORIDA

**EIGHTH FLOOR - UNIT 813 (South Wing)**



**TOMOKA ENGINEERING**

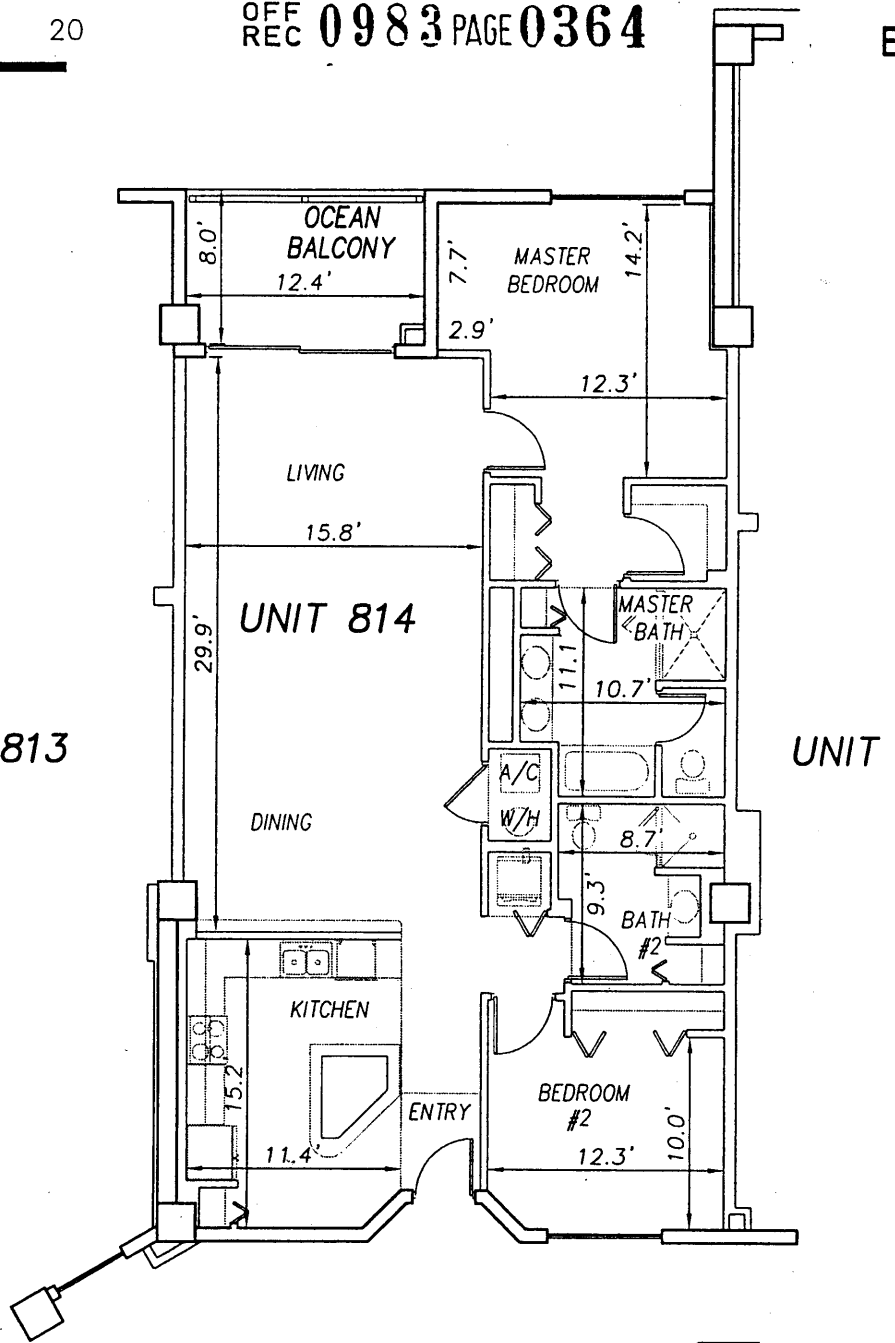
CIVIL ENGINEERING & LAND SURVEYING SINCE 1976  
DAYTONA BEACH FLAGLER/PALM COAST  
Main Office: 900 So. Ridgewood Ave., Daytona Beach, FL 32114  
Phone: 386-257-1600 Fax: 386-257-1601  
email: tomoka@tomoka-eng.com website: www.tomoka@tomoka-eng.com

0 10 20

OFF REC 0983 PAGE 0364

EXHIBIT 'B'

SCALE 1" = 10'



UNIT 813

UNIT 814

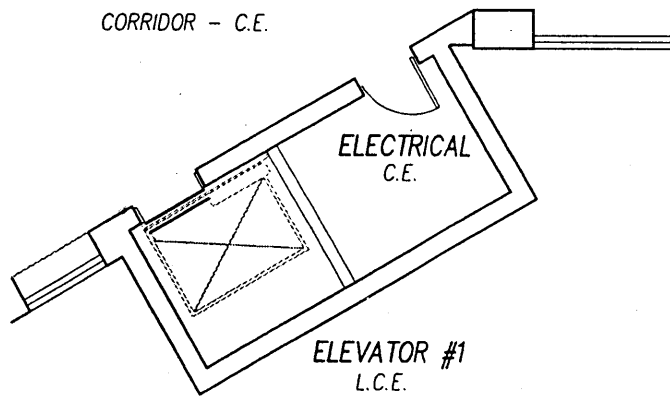
UNIT 815

CORRIDOR - C.E.

**SURF CLUB II  
CONDOMINIUM**

SITUATED IN MATANZAS SHORES  
FLAGLER COUNTY, FLORIDA

**EIGHTH FLOOR - UNIT 814 (South Wing)**



**ELEVATOR #1  
L.C.E.**



**TOMOKA ENGINEERING**

CIVIL ENGINEERING & LAND SURVEYING SINCE 1976  
DAYTONA BEACH FLAGLER/PALM COAST

Main Office: 900 So. Ridgewood Ave., Daytona Beach, FL 32114  
Phone: 386-257-1600 Fax: 386-257-1601  
email: tomoka@tomoka-eng.com website: www.tomoka@tomoka-eng.com

LB #2232

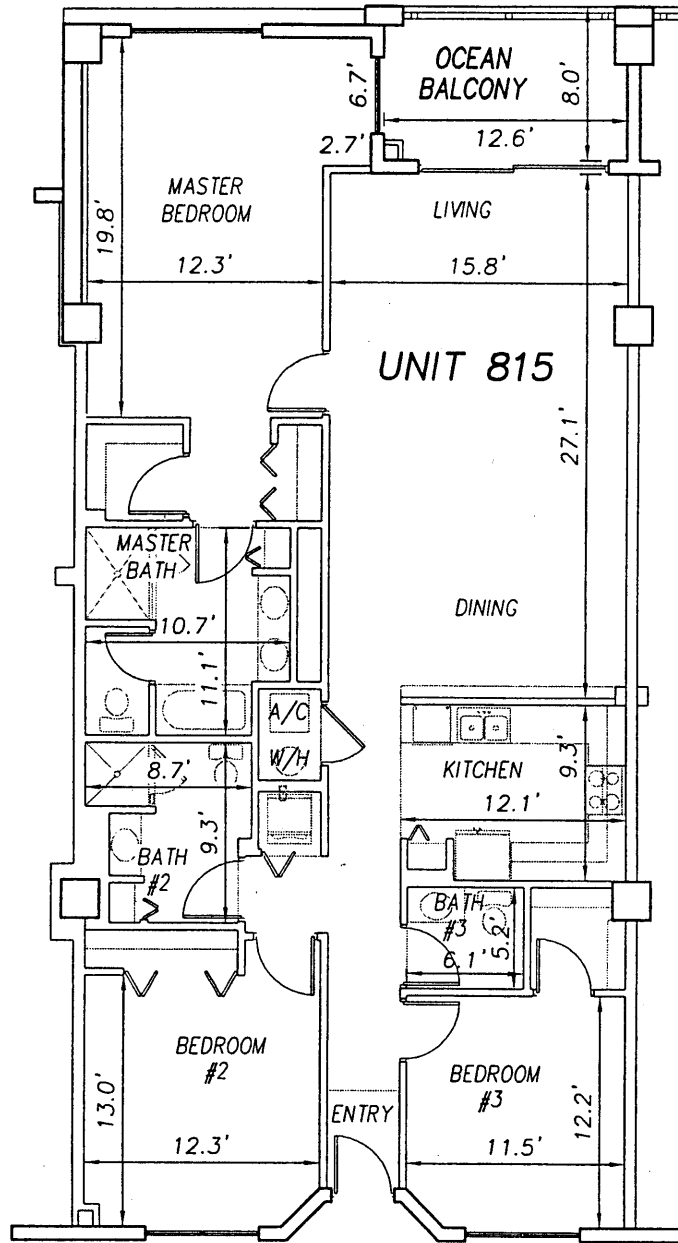
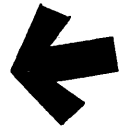
\\survey\2001\land projects\2003\T3070PCBW\dwg\CONDO-sh 188 - 213 8th Fl.dwg 09/11/2003 09:13:51 AM EDT

0 10 20



SCALE 1" = 10'

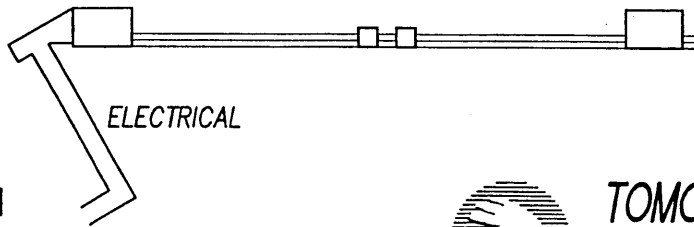
OFF REC 0983 PAGE 0365 EXHIBIT 'B'



UNIT 814

UNIT 816

CORRIDOR - C.E.



ELECTRICAL

### SURF CLUB II CONDOMINIUM

SITUATED IN MATANZAS SHORES  
FLAGLER COUNTY, FLORIDA

## EIGHTH FLOOR - UNIT 815 (South Wing)



### TOMOKA ENGINEERING

CIVIL ENGINEERING & LAND SURVEYING SINCE 1976  
DAYTONA BEACH FLAGLER/PALM COAST

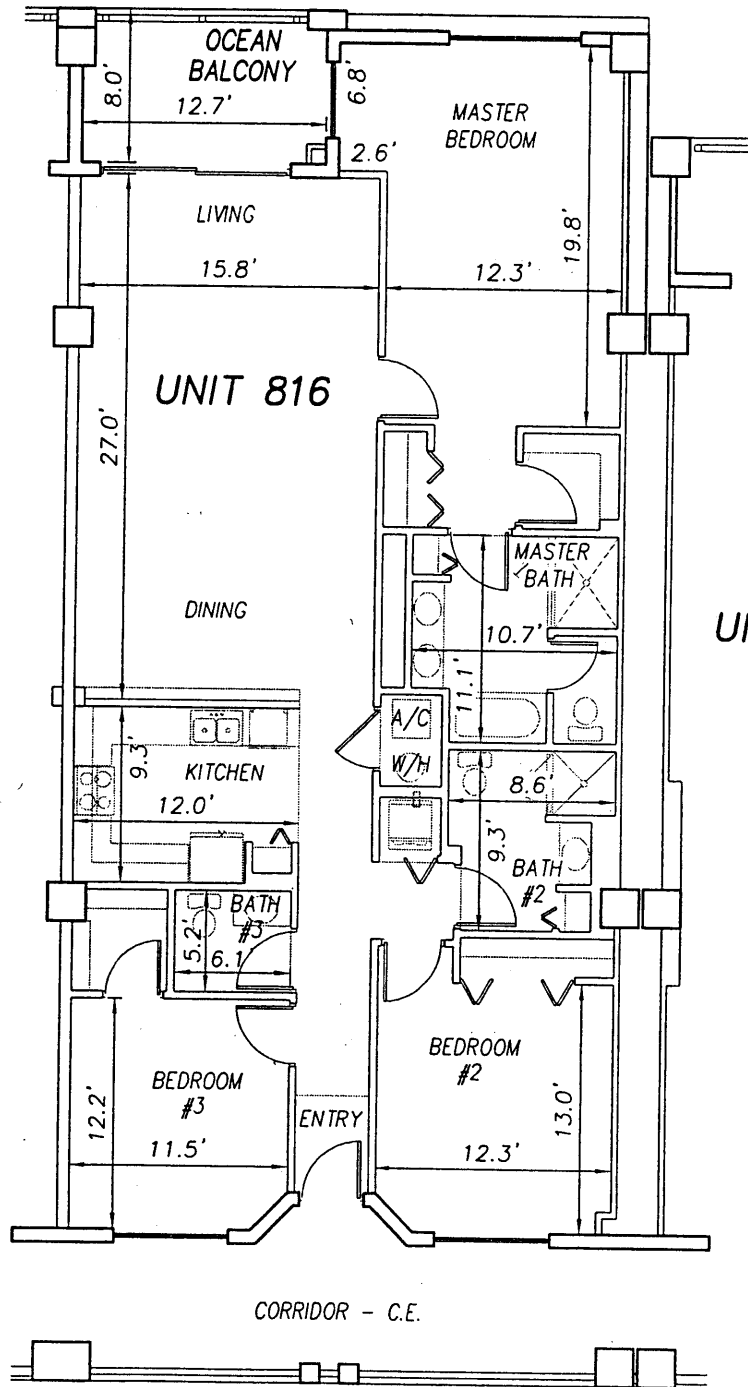
Main Office: 900 So. Ridgewood Ave., Daytona Beach, FL 32114  
Phone: 386-257-1600 Fax: 386-257-1601  
email: tomoka@tomoka-eng.com website: www.tomoka@tomoka-eng.com

0 10 20

SCALE 1" = 10'

OFF REC 0983 PAGE 0366

EXHIBIT 'B'



UNIT 815

UNIT 816

UNIT 817

**SURF CLUB II  
CONDOMINIUM**

SITUATED IN MATANZAS SHORES  
FLAGLER COUNTY, FLORIDA

**EIGHTH FLOOR - UNIT 816 (South Wing)**



**TOMOKA ENGINEERING**

CIVIL ENGINEERING & LAND SURVEYING SINCE 1976  
DAYTONA BEACH FLAGLER/PALM COAST

Main Office: 900 So. Ridgewood Ave., Daytona Beach, FL 32114  
Phone: 386-257-1600 Fax: 386-257-1601  
email: tomoka@tomoka-eng.com website: www.tomoka@tomoka-eng.com

LB #2232

DATE ISSUED: 07/23/2003

JOB # T3070PCBW1

SHEET 205 OF 213 SHEETS

\\survey\2001\land projects t2003\T3070PCBW1\dwg\CONDO-sh 188 - 213 8th Fl.dwg 09/11/2003 09:13:51 AM EDT

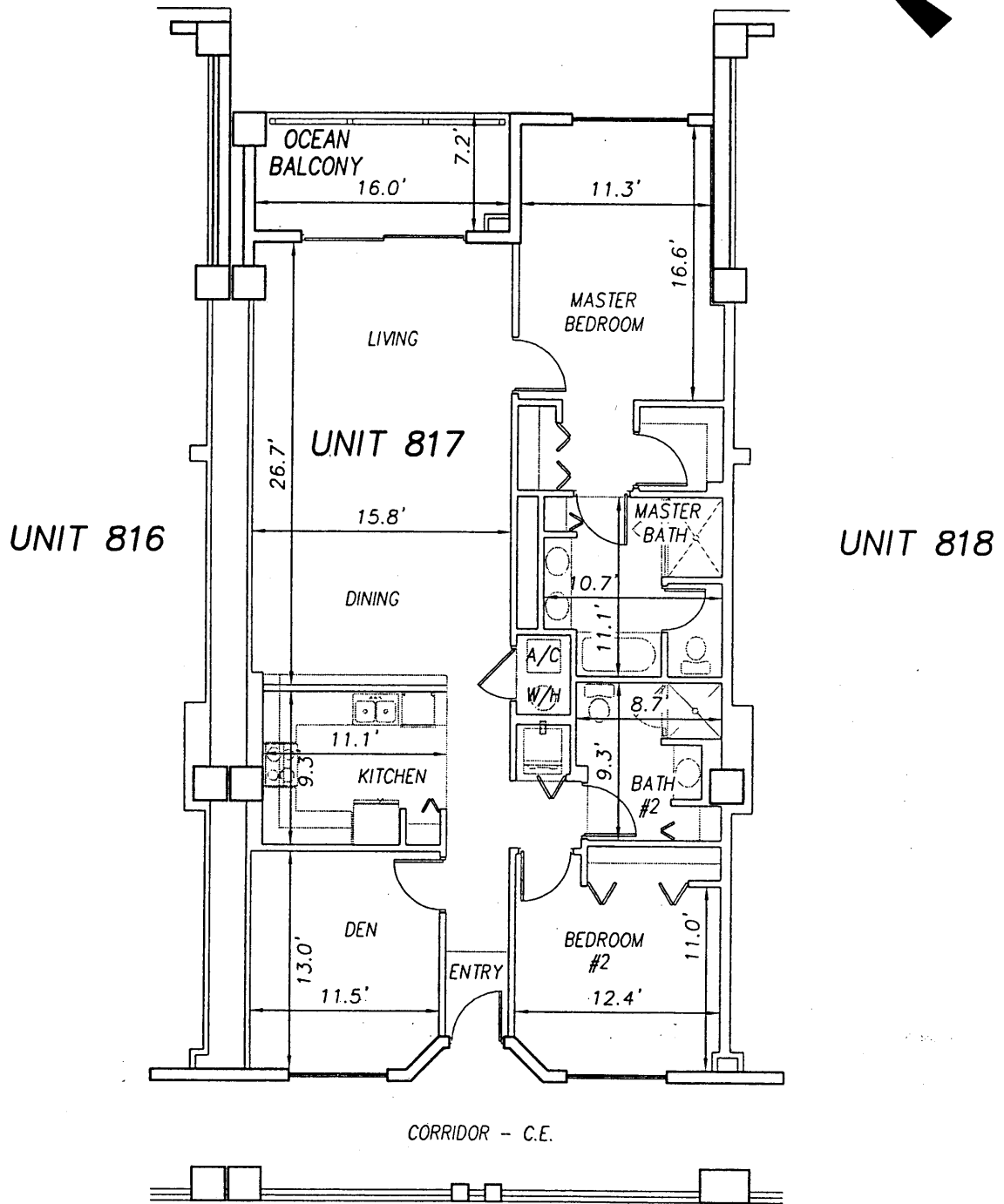
0 10 20



SCALE 1" = 10'

OFF REC 0983 PAGE 0367

EXHIBIT 'B'



\\survey\2001\land projects\2003\T3070PCBW1\dwg\CONDO-sh 188 - 213 8th Fl.dwg 09/11/2003 09:13:51 AM EDT

SURF CLUB II  
CONDOMINIUM  
SITUATED IN MATANZAS SHORES  
FLAGLER COUNTY, FLORIDA

EIGHTH FLOOR - UNIT 817 (South Wing)



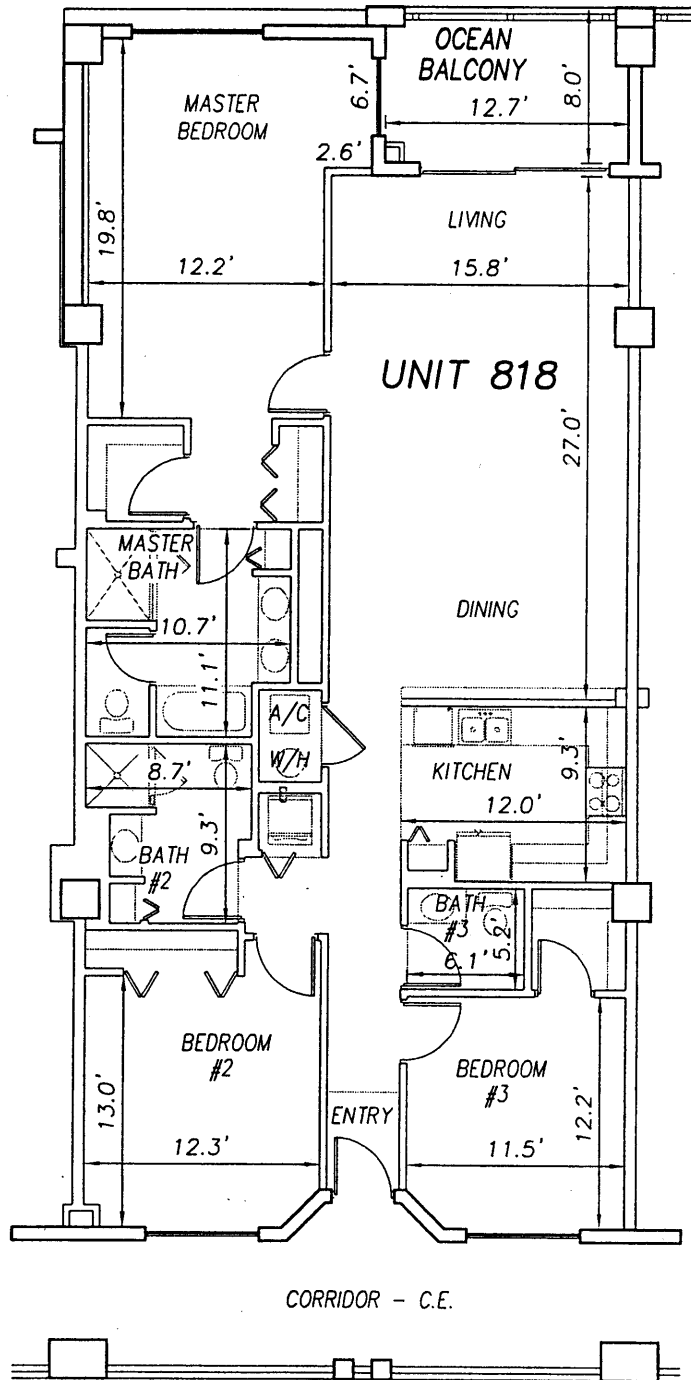
**TOMOKA ENGINEERING**  
CIVIL ENGINEERING & LAND SURVEYING SINCE 1976  
DAYTONA BEACH FLAGLER/PALM COAST  
Main Office: 900 So. Ridgewood Ave., Daytona Beach, FL 32114  
Phone: 386-257-1600 Fax: 386-257-1601  
email: tomoka@tomoka-eng.com website: www.tomoka-tomoka-eng.com

0 10 20

OFF REC 0983 PAGE 0368

EXHIBIT 'B'

SCALE 1" = 10'



UNIT 817

UNIT 819

**SURF CLUB II  
CONDOMINIUM**

SITUATED IN MATANZAS SHORES  
FLAGLER COUNTY, FLORIDA

**EIGHTH FLOOR - UNIT 818 (South Wing)**



**TOMOKA ENGINEERING**

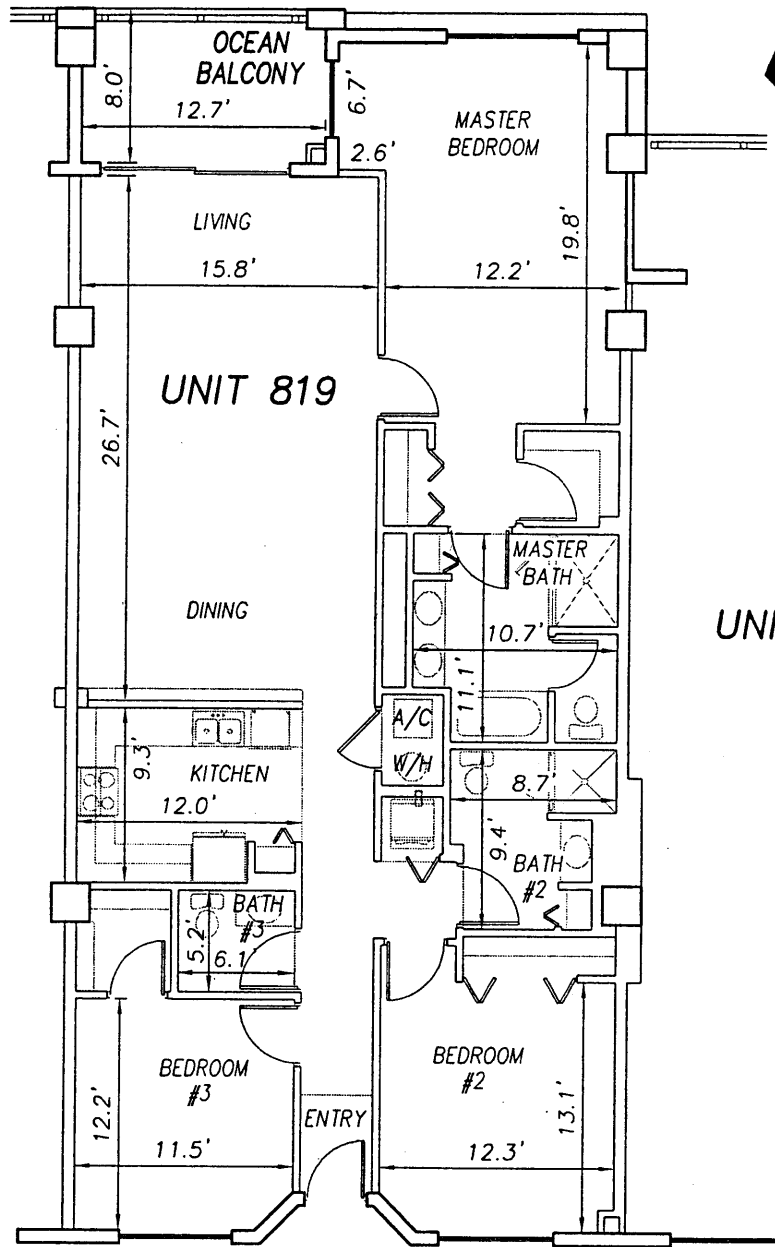
CIVIL ENGINEERING & LAND SURVEYING SINCE 1976  
DAYTONA BEACH FLAGLER/PALM COAST  
Main Office: 900 So. Ridgewood Ave., Daytona Beach, FL 32114  
Phone: 386-257-1800 Fax: 386-257-1801  
email: tomoka@tomoka-eng.com website: www.tomoka@tomoka-eng.com

0 10 20

OFF REC 0983 PAGE 0369

EXHIBIT 'B'

SCALE 1" = 10'



UNIT 818

UNIT 819

UNIT 820

CORRIDOR - C.E.

ELEVATOR #3  
L.C.E.

TELEPHONE/  
CABLE  
C.E.

**SURF CLUB II  
CONDOMINIUM**

SITUATED IN MATANZAS SHORES  
FLAGLER COUNTY, FLORIDA

**EIGHTH FLOOR - UNIT 819 (South Wing)**



**TOMOKA ENGINEERING**

CIVIL ENGINEERING & LAND SURVEYING SINCE 1976  
DAYTONA BEACH FLAGLER/PALM COAST

Main Office: 900 So. Ridgewood Ave., Daytona Beach, FL 32114

Phone: 386-257-1600

Fax: 386-257-1601

email: tomoka@tomoka-eng.com

website: www.tomoka@tomoka-eng.com

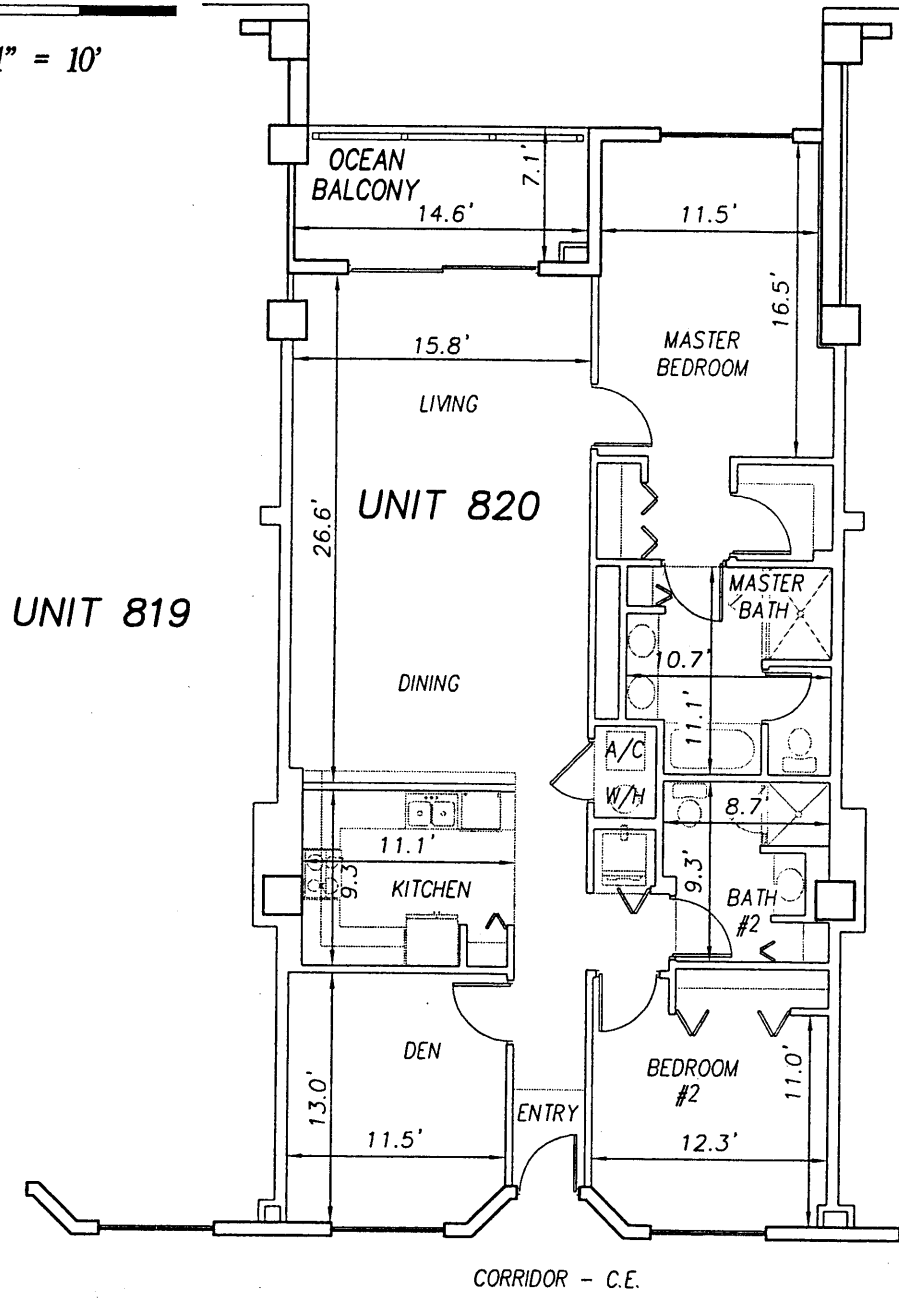


EXHIBIT 'B'



0 10 20

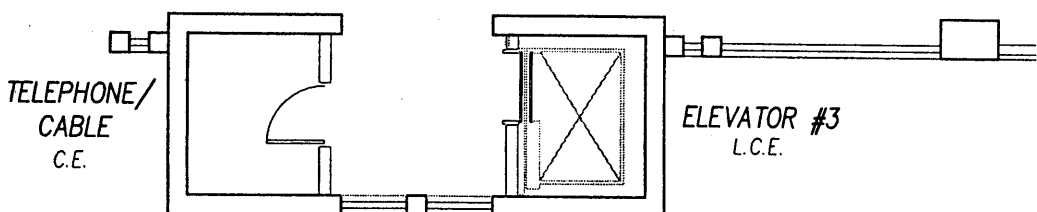
SCALE 1" = 10'



UNIT 819

UNIT 820

UNIT 821



**SURF CLUB II  
CONDOMINIUM**

SITUATED IN MATANZAS SHORES  
FLAGLER COUNTY, FLORIDA

**EIGHTH FLOOR - UNIT 820 (South Wing)**



**TOMOKA ENGINEERING**  
 CIVIL ENGINEERING & LAND SURVEYING SINCE 1976  
 DAYTONA BEACH FLAGLER/PALM COAST  
 Main Office: 900 So. Ridgewood Ave., Daytona Beach, FL 32114  
 Phone: 386-257-1600 Fax: 386-257-1601  
 email: tomoka@tomoka-eng.com website: www.tomoka@tomoka-eng.com

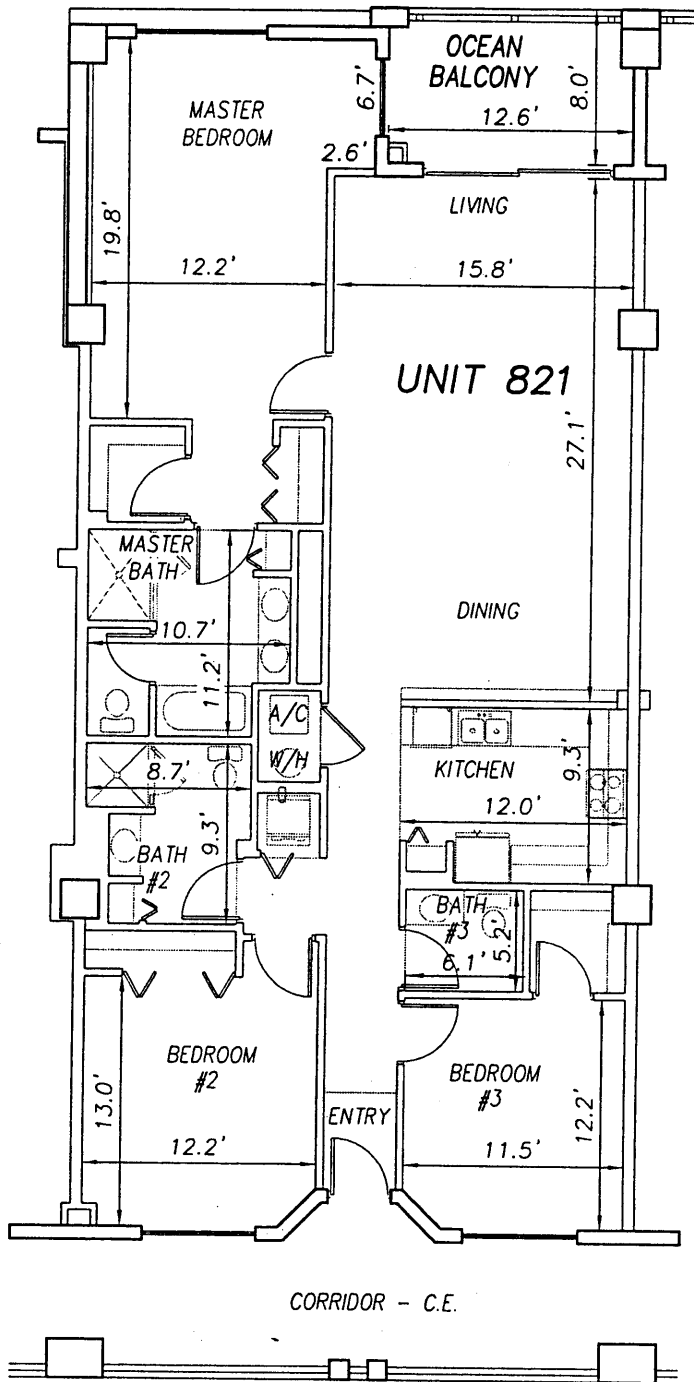
\\survey\2001\land projects\2003\T3070PCBWI\dwg\CONDO-sh 188 - 213 8th Fl.dwg 09/11/2003 09:13:51 AM EDT

0 10 20

OFF REC 0983 PAGE 0371

EXHIBIT 'B'

SCALE 1" = 10'



UNIT 820

UNIT 822

**SURF CLUB II  
CONDOMINIUM**

SITUATED IN MATANZAS SHORES  
FLAGLER COUNTY, FLORIDA

**EIGHTH FLOOR - UNIT 821 (South Wing)**



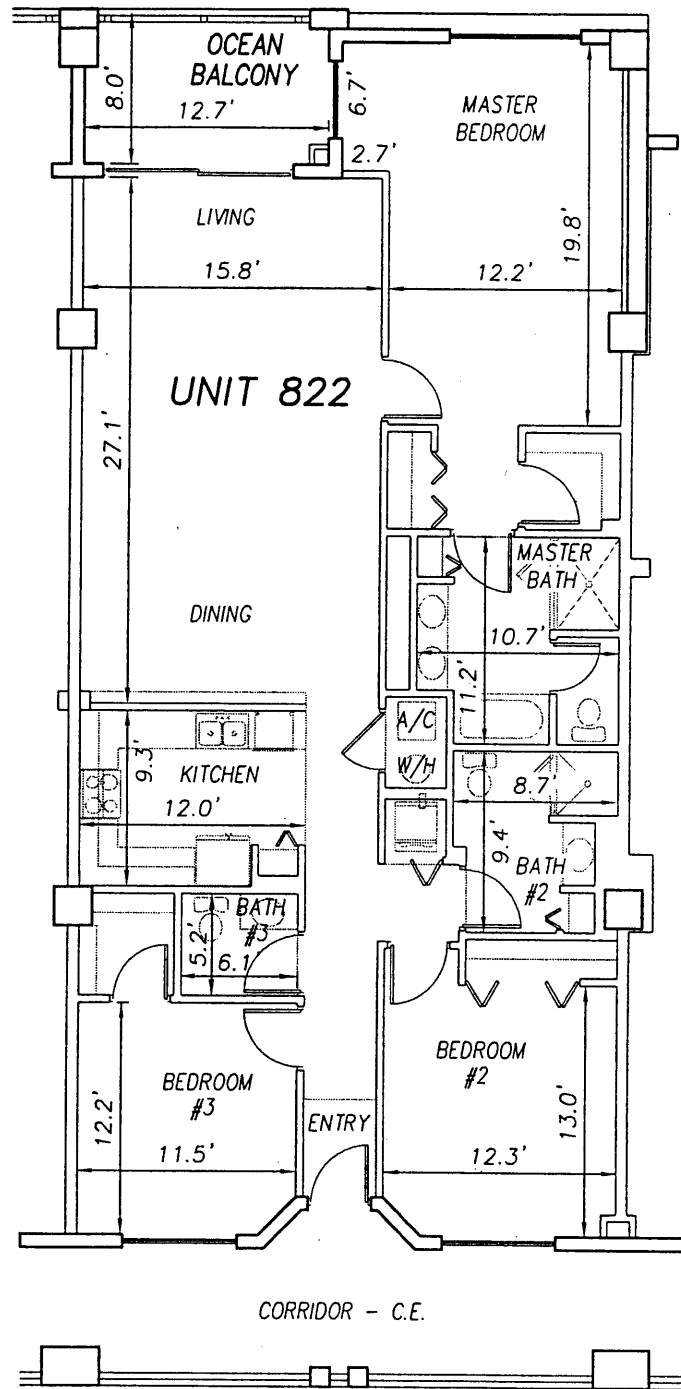
**TOMOKA ENGINEERING**  
 CIVIL ENGINEERING & LAND SURVEYING SINCE 1976  
 DAYTONA BEACH FLAGLER/PALM COAST  
 Main Office: 900 So. Ridgewood Ave., Daytona Beach, FL 32114  
 Phone: 386-257-1600 Fax: 386-257-1601  
 email: tomoka@tomoka-eng.com website: www.tomoka@tomoka-eng.com

\\survey\2001\land projects\2003\T3070PCBWI\dwg\CONDO-sh 188 - 213 8th Fl.dwg 09/11/2003 09:13:51 AM EDT

0 10 20

OFF REC 0983 PAGE 0372 EXHIBIT 'B'

SCALE 1" = 10'



UNIT 821

UNIT 822

UNIT 823

**SURF CLUB II  
CONDOMINIUM**

SITUATED IN MATANZAS SHORES  
FLAGLER COUNTY, FLORIDA

**EIGHTH FLOOR - UNIT 822 (South Wing)**



**TOMOKA ENGINEERING**

CIVIL ENGINEERING & LAND SURVEYING SINCE 1976  
DAYTONA BEACH FLAGLER/PALM COAST

Main Office: 900 So. Ridgewood Ave., Daytona Beach, FL 32114  
Phone: 386-257-1600 Fax: 386-257-1801  
email: tomoka@tomoka-eng.com website: www.tomoka@tomoka-eng.com

\\survey\2001\cond projects\2003\T3070PCBWI\dwg\CONDO-sh 188 - 213 8th Fl.dwg 09/11/2003 09:13:51 AM EDT

0 10 20

OFF REC 0983 PAGE 0373

EXHIBIT 'B'

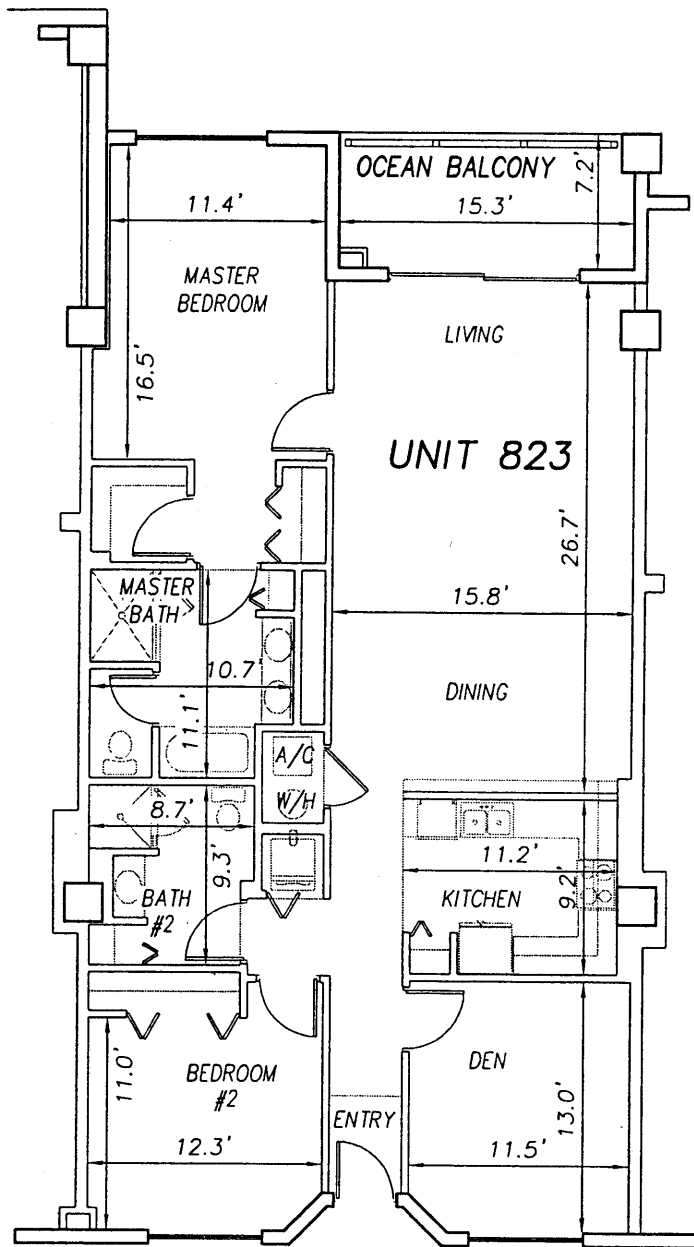
SCALE 1" = 10'



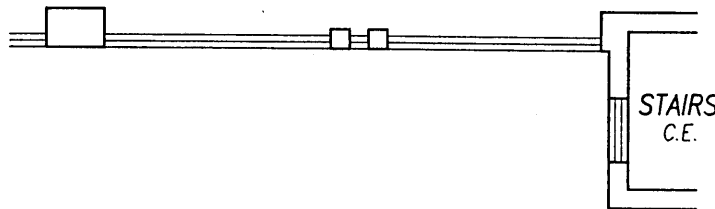
UNIT 822

UNIT 823

UNIT 824



CORRIDOR - C.E.



**SURF CLUB II  
CONDOMINIUM**

SITUATED IN MATANZAS SHORES  
FLAGLER COUNTY, FLORIDA

**EIGHTH FLOOR - UNIT 823 (South Wing)**



**TOMOKA ENGINEERING**

CIVIL ENGINEERING & LAND SURVEYING SINCE 1976  
DAYTONA BEACH FLAGLER/PALM COAST

Main Office: 900 So. Ridgewood Ave., Daytona Beach, FL 32114  
Phone: 386-257-1600 Fax: 386-257-1601  
email: tomoka@tomoka-eng.com website: www.tomoka@tomoka-eng.com

\\survey\2001\land projects t2003\T3070PCBWI\dwg\CONDO-sh 188 - 213 8th Fl.dwg 09/11/2003 09:13:51 AM EDT

0 10 20



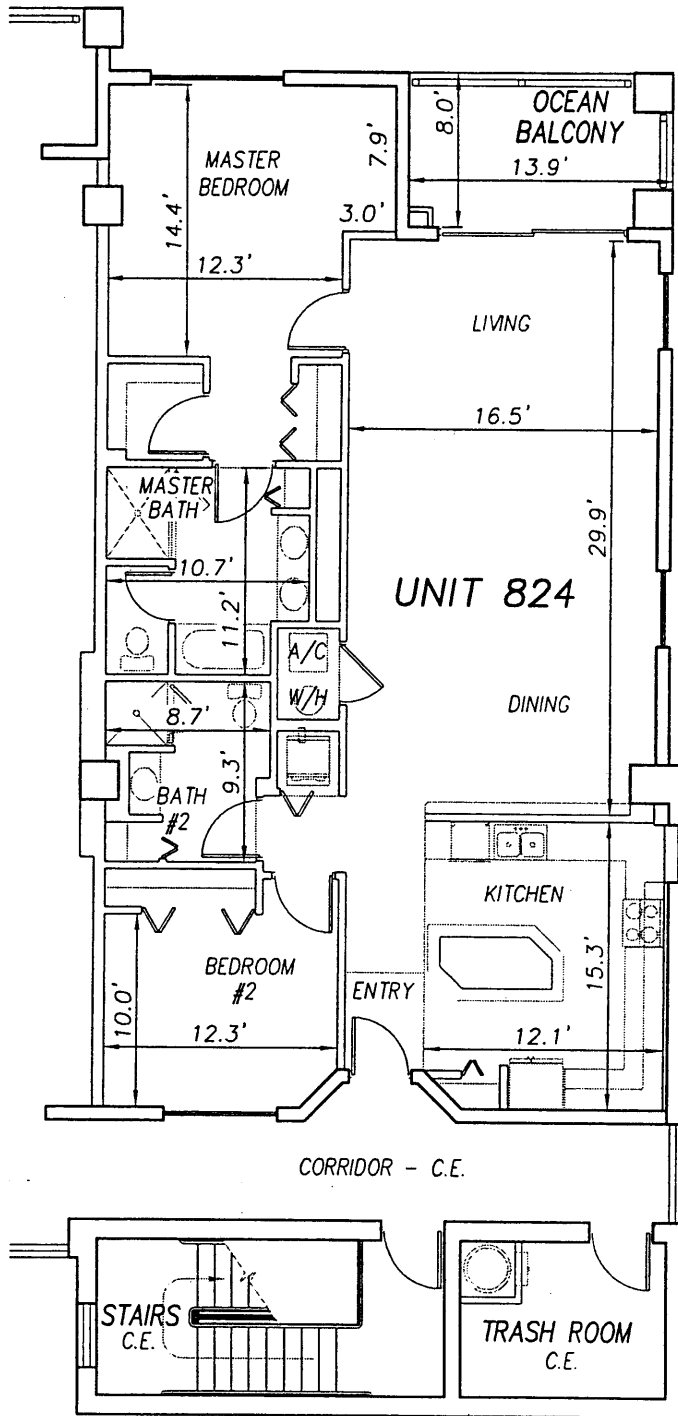
SCALE 1" = 10'

OFF REC 0983 PAGE 0374

EXHIBIT 'B'



UNIT 823



**SURF CLUB II  
CONDOMINIUM**

SITUATED IN MATANZAS SHORES  
FLAGLER COUNTY, FLORIDA

**EIGHTH FLOOR - UNIT 824 (South Wing)**



**TOMOKA ENGINEERING**

CIVIL ENGINEERING & LAND SURVEYING SINCE 1976  
DAYTONA BEACH FLAGLER/PALM COAST

Main Office: 900 So. Ridgewood Ave., Daytona Beach, FL 32114  
Phone: 386-257-1600 Fax: 386-257-1601  
email: tomoka@tomoka-eng.com website: www.tomoka@tomoka-eng.com

LB 7/232

\\survey\2001\land projects t2003\T3070PCBWI\dwg\CONDO-sh 188 - 213 8th Fl.dwg 09/11/2003 09:13:51 AM EDT